



SNAM LEADER IN
SUSTAINABLE MOBILITY

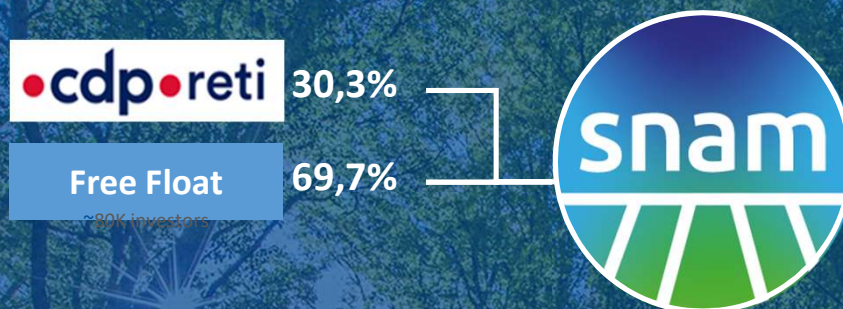
A top-down photograph of a white cup of coffee on a saucer, a pair of white earphones, an open spiral notebook with a black pen, and a book titled "LINE ON CHAMPS-ÉLYSÉES COLOMBE TROUSSEAU PALAIS NATIONAL MUSÉE DU LOUVRE CHÂTEAU D'AMBOISE HÔTEL DE VILLE" lying on a light-colored wooden surface.

1. Who is Snam

2. Who is S4M and what we do

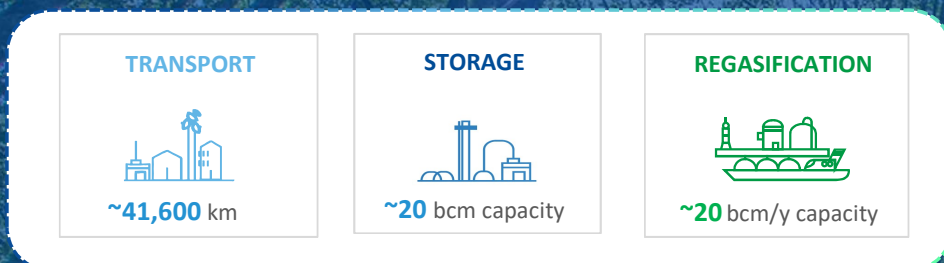
3. The S4M Business Model

Snam is one of the main global energy infrastructure companies



€ 22,6 bln	~ € 25 bln	1,1%
RAB + affiliates ('19)	Enterprise Value	Debt cost
€ 1.093 mln	~ € 13 bln	BBB+
Net Profit Adj ('19)	Market Cap	Rating

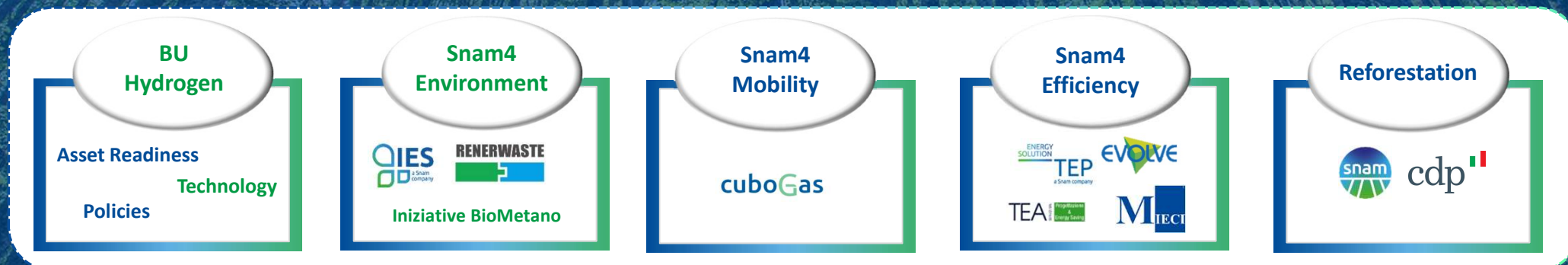
NATURAL GAS (Italy and international associates)



INTERNATIONAL ASSOCIATES



NEW START UPS FOR ENERGY TRANSITION



*Panigaglia, OLT, Rovigo, Revithoussa (DESFA)

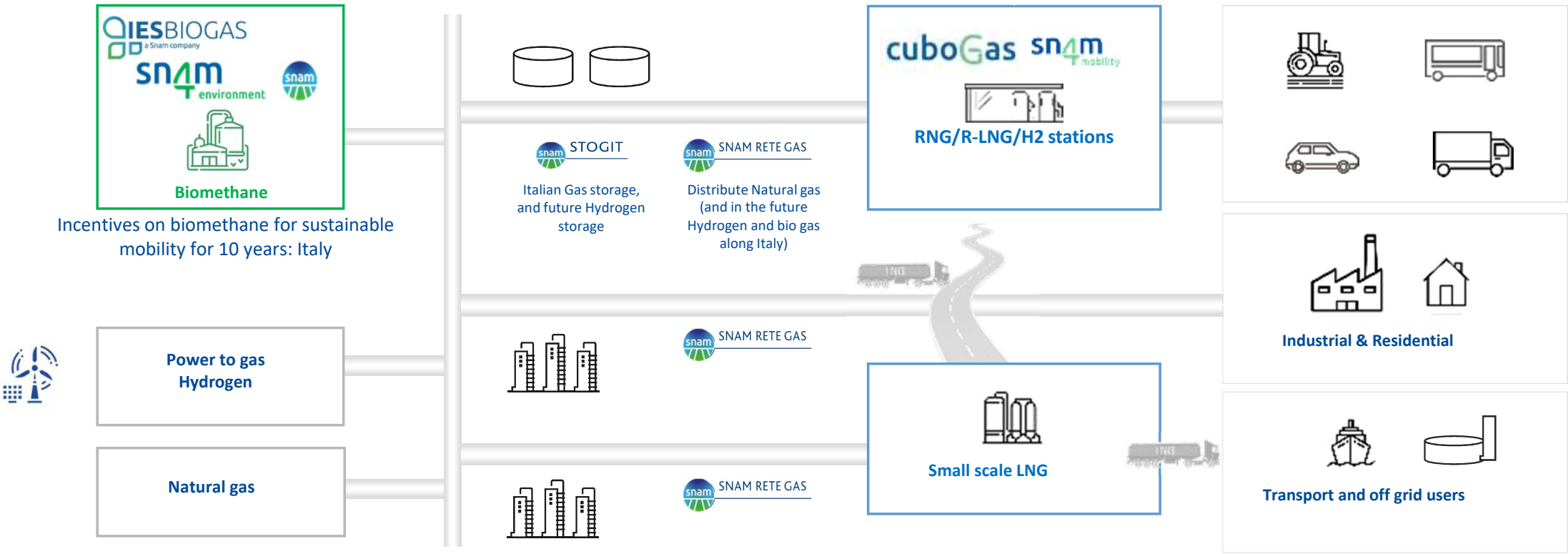
RNG, LNG and H2 are the pillars of Snam's strategy for the Energy Transition



From the *production...*

through the *pipeline ...*

to the *vehicles...*



Energy efficiency for residential and industrial actors

A top-down view of a white ceramic cup filled with a frothy, light-brown beverage, likely coffee or a latte, sitting on a matching white saucer. To the right of the cup, a pair of white wired earphones with a small inline control is resting on a light-colored wooden surface with visible grain.

1. Who is Snam

A top-down view of a spiral-bound notebook with lined pages, lying flat. A black pen is placed diagonally across the notebook. To the left of the notebook, a dark-colored book is partially visible, showing text including "LINE ON", "CHAMPS", "CO", "TE", "PAL", "MUSÉE D", "LOUVRE", "CHÂTE", and "HÔTEL DE V". The items are on a light-colored wooden surface.

2. Who is S4M and what we do

3. The S4M Business Model

Snam4Mobility: Company Mission



mission

Promote the use of compressed NATURAL GAS (CNG), liquid (LNG), biomethane (RNG/R-LNG) and HYDROGEN (H2) for Transport

Support the development of **refueling facilities**

Develop **technologies** and know-how for **innovation**

Facilitate **communication** and relations with **institutions**

Inform and raise **awareness** about the **benefits** of **NG**



Snam 4 Mobility Numbers

2017

Start
activities

30000

CNG stations installed
through **cuboGas**

Acquired by Snam in 2018

3.000 units installed

80+ years experience

150+

CNG/LNG
stations
currently in the
building pipeline

IVECO

FCA
FIAT CHRYSLER AUTOMOBILES



10+

Partnership



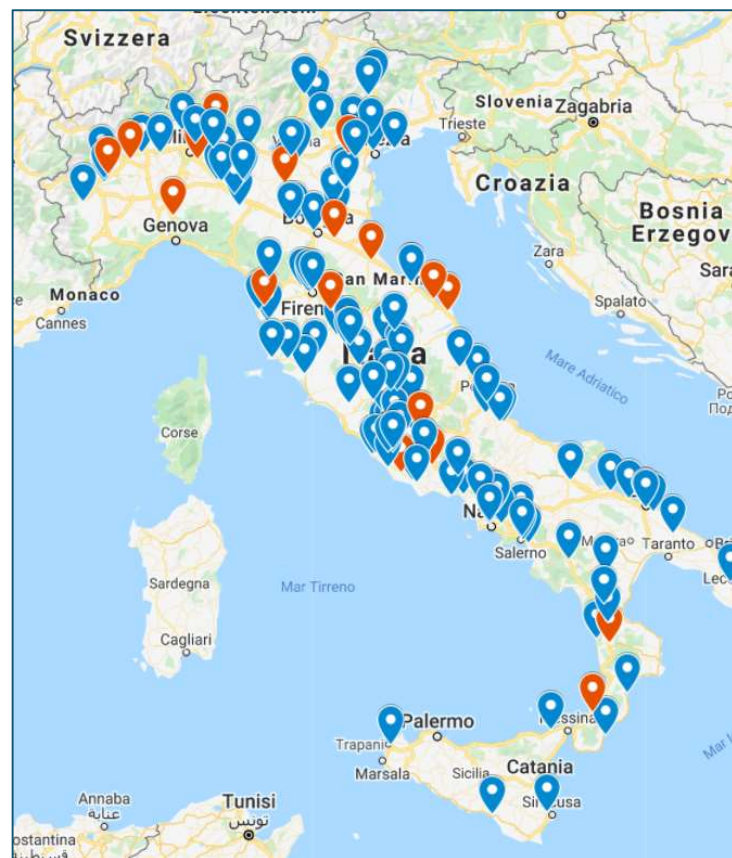


Infrastructure provider: today's snapshot



- Signed contracts for 155 stations (ca.22% LNG), evenly distributed among northern, central and southern regions
- Commissioned 40 stations of which 7 LNG
- Increased the presence on the **motorway segment** (20 vs 35 currently operational)
- Supported **CNG self-service launch**, first unmanned S4M site launched Q2-21
- Synergies with S4E to **promote biomethane** and obtain public grants (all the S4M sites will sell renewable gas)
- Obtained EU CEF fundings for 17 LNG stations, 8 of which will provide a critical mass for Snam SSLNG plant in Caserta

S4M CONTRACTUALIZED STATIONS

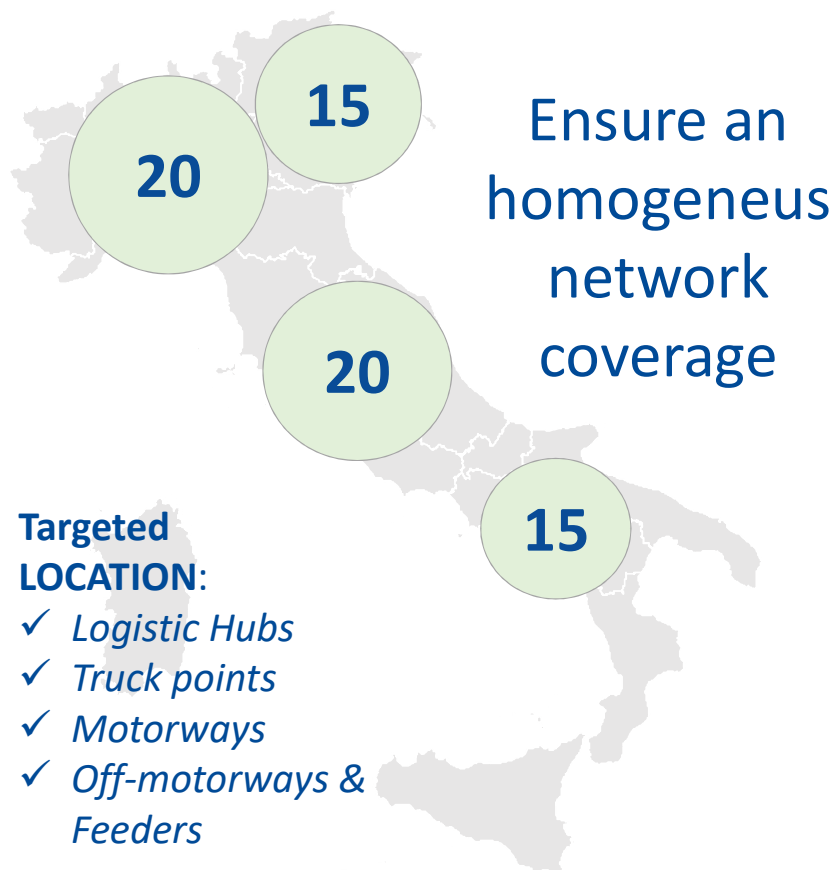


 LNG station  CNG station

On LNG / R-LNG: S4M will be the 1st network of sites in Italy



2021-2024 PLAN



2021 ACTUAL

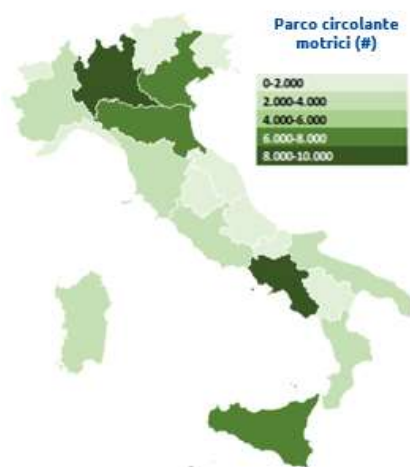


* Updated at June'21

Identification criteria for the minimum H2 national network

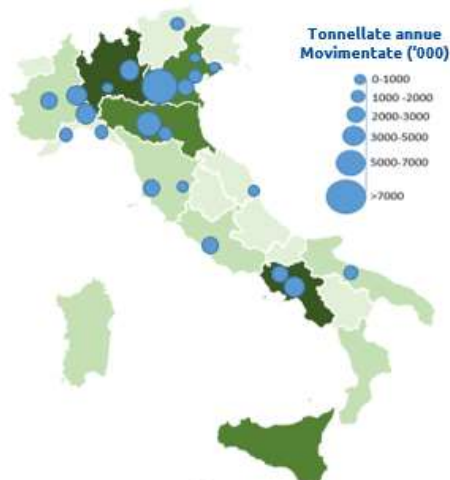


1. Regional new truck registrations



Fonte: Dati ACI 2019

2. Logistic nodes & warehouses



Fonte: Piano Nazionale della Logistica 2012-2020

3. MTW traffic flow



Fonte: Dati AISCAT 2019



 N. of stations per region (20 in total)

The development of the H2 distribution network will also have to take into account the presence of industrial sites dedicated to H2 production (e.g. *hydrogen valleys*).

10 top locations have already been identified

Render “station of the future”





1. Who is Snam

2. Who is S4M and what we do

3. The S4M Business Model

S4M offers a “All inclusive” service model



1



ZERO CAPEX FOR OUR PARTNERS

2



**EPC + LONG TERM RENTAL
+ R&M PARTNERSHIP**

3



ADMIN FULFILLMENTS
(authorizations / licenses support)



Feasibility and executive
design

Permitting and
authorizations

Follow gas connection
process

Procurement of materials

Construction, test and
construction

Ordinary & extra-ordinary
Maintenance

S4M portfolio includes LNG, CNG, H2 and Mother/Daughter stations





Thank you